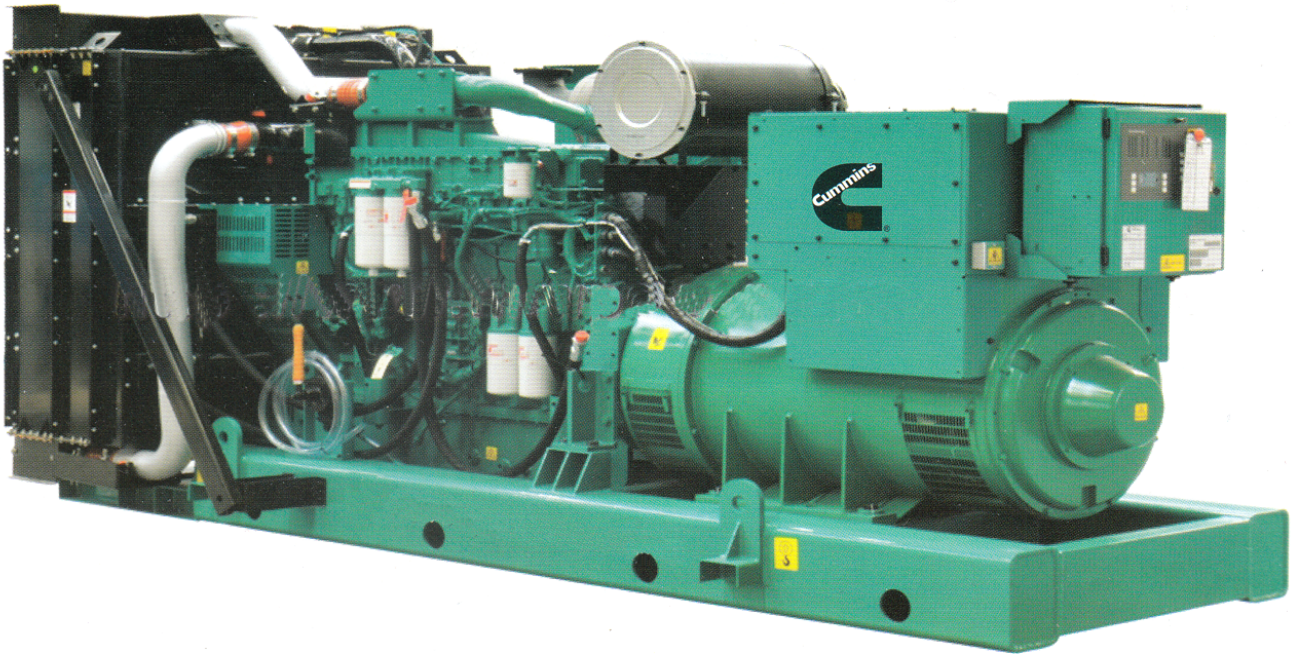




Cummins SERIES DIESEL GENERATING SET



Cummins diesel series is the most popular generating set of FMW. Cummins is the renowned diesel engine origin from U.S.A. Now they have also assembling line in CHINA. FMW added STAMFORD type alternator to get the best performance of the engine. The high quality engine allows the generating set to go for the long time operations and FMW assembling system ensure its users to get the maximum from this series. For industrial or official use, FMW Cummins Series Diesel Generating Set is the unparallel performer.

SPECIFICATION

Gen set Type	GFC24	GFC32	GFC50	GFC80	GFC100	GFC120	GFC160	GFC200	GFC250	GFC300	GFC400	GFC500
Eng. Model	4B3.9-G	4BT3.9-G	4BTA3.9-G	6BT5.9-G	6BTA5.9-G	6BTAA5.9-G	6CTA8.3-G	6LTAA8.9-G	NTA855-G1A	NTA855-G2A	KTA19-G3	KTAA19-G6
Output (kW)	24	36	50	92	110	120	163	220	291	343	448	555
Fuel Consumption Lt/hr @ 80%	4	6	8	11	14	17	20	24	32	35	70	82
Speed (R/min)	1500/1800											
Cooling Method	Closed Water Cooled											
Starting Method	Electric Starting											
Alt. Model	PI144F	PI144J	UCI224E	UCI274C	UCI274D	UCI274E	UCI274G	UCI274J	HCI444D	HCI444E	UCI544C	HCI544E
Output/kW(kVA)	24/30	32/40	50/62.5	80/100	100/125	120/150	160/200	200/250	250/312	300/375	400/500	500/625
Rated Current(A)	43.2	57.6	90	144	180	216	288	360	450	540	720	900
Net Wight (Aprx.) (Open/Silent) / kg	700 850	750 920	830 1050	980 1250	1050 1330	1150 1370	1250 1550	2400	2400	3200	4500	6000
Length(cm) (Open/Silent)	190 200	205 250	215 290	215 290	235 305	240 320	245 320	380	410	450	500	550
Width(cm) (Open/Silent)	70 90	70 105	82 105	90 125	115 150	115 150	120 160	175	190	200	220	260
Height(cm) (Open/Silent)	112 120	120 130	125 140	135 160	150 180	150 180	155 190	215	230	250	280	300

***All the output capacity rated as Standby at 100%
For long run it should be rated as Prime at 90%

Do you have any Question? Please visit www.fmwpower.com
Have any Suggestion? Please Contact fmwpower@vip.163.com