



SHANGHAI FUJI ELEVATOR CO.,LTD.

ADD: No.528, Ruiqing Road Pudong, Shanghai City, China

TEL: +86-18021011919, +86-021-51973549, 51973450

Fax: 021-51973549

E-mail: sales@shanghaifujilevator.com

Website: www.shanghaifujilevator.com

The printed products are for reference only. The Company reserves the right to change product design and specifications. The printed matter contained information on the suitability of the products are extremely special purpose, merchantability, quality or any procurement terms of the agreement is not long enough to guarantee or commitment of any kind, express or implied.

2018 Copyright



F Fuji
フジエレベーター

SHANGHAI FUJI ELEVATOR



烫红金位置

SHANGHAI FUJI ELEVATOR CO.,LTD

INTRODUCTION OF ADVANCED JAPAN TECHNOLOGY START A GOOD LIFE

Shanghai FUJI Elevator in draught the most advanced elevator technology from Japan, and adopt the world top equipment. Products manufacturing strictly Implement European EN115, EN81 standard, which equals toChian GB16899-1997, GB7588-2003 standard, and we are awarded the IS09001: 2008 quality system certification as well as the products certifications with TUV, CE logo, which are issued by japan Technology Monitoring Association.

INHERITANCE-QUALITY ELEVATOR





Advanced equipment top manufacturing device
Establish perfect quality

FUJI elevator introduces the world's first-class production equipment, with the complete set of imported advanced production equipment and precise and exquisite manufacturing technology. Ensure that our level of processing technology with world-class competitiveness, first-class testing equipment, each big shop to have a clear division of responsibilities, the process is rigorous, large-scale, high efficiency, high quality production mode.

COMPANY PROFILE

Shanghai FUJI Elevator Co., Ltd. originated in 1985 belongs to the very large group, da hai holding, is the first national AA level professional elevator manufacturing, installation, modification, maintenance license. Located in no.299 baofeng road, xuxing town, jiading district, Shanghai, the company is the headquarters center integrating elevator, escalator, mechanical parking equipment r&d, production, marketing, display and training. The company has a professional comprehensive product display and customer experience center, 4.0 on behalf of the industry's advanced level of automated production lines, elevators dedicated test facilities and Internet data monitoring center, the quality and safety operation of the elevator provides a reliable guarantee. The 108-meter modern test tower has become a landmark in the area. The company can produce up to 10000 sets of annual production capacity, and provide a comprehensive elevator solution for the three-dimensional transportation of various buildings.

FUJI elevator core technology originates from Japan, through the comprehensive technical innovation, optimizes the integration of the global elevator industry resources, and fully creates the elevator products that meet the needs of the middle and high-end market. At home, the company has specialized cooperation with Shanghai jiaotong university and east China institute of science and technology, and carries out professional research and development in elevator high-tech, energy conservation and environmental protection and high security. Henk elevator is now in the product design, production, installation and the whole process quality monitoring and other aspects to reach and exceed the European market similar products standard.

There is no best, only better. FUJI elevator is the best practitioner in the global elevator industry, the leader in safety technology, the leader in energy conservation and environmental protection technology, and the technology of high-tech humanization service technology.



ADVANCED TECHNOLOGY

Top-grade PM variable frequency door machine system

It utilizes the advanced PM variable voltage & variable frequency control technology to the lift door machine system so as to ensure the smooth lift door and the quiet switch. It enhances the sensitivity of the lift door switch and automatically regulates the most proper switch speed in every floor to guarantee the fine security and reliability. And the self-tuning door load detector further elevates the sensitivity of the lift door switch. It monitors the lift door load variation of each floor. When it encounters the abnormal drag, it will reopen the lift door.



Group Control System Technology

Support 8 group control, through the group control system coordination and scheduling, unified management to improve load efficiency and reduce energy consumption.

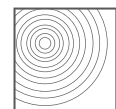
Destination Dispatching Function

According to the different stops of the passengers, This function can optimize the allocation of multiple elevators to reduce the stops and provide more efficient service.



Special frequency inverter for high efficient vector elevator

Application of high-performance current vector control and absolute encoder, achieves the torque compensation function of sensorless, making Passengers more comfortable in lifting experience. "Stopping self-learning" function of elevator traction machine makes elevator's maintenance easier. Lifting function of automatic torque control can deal with various loading easily.



Long service life



Rapid starting speed



Precise and stable operation

Intelligent identification system

Using the IC card, face recognition ect to cintrll the elevator which greatly enhance the safaty of building management and make the passenger feel safety.



GEARLESS PERMANENT MAGNETIC SYNCHRONOUS TRACTION MACHINE

Permanent magnetic synchronous traction technology, jointly developed by FUJI Elevator and traction machine factory, is a core technology fitting well with the idea of energy conservation and environmental protection. Compared with traditional technology, gearless permanent magnetic synchronous traction technology is more environment-friendly and space-saving. It will lower the cost in construction and operation. It is easy to realize the requirement of maintenance-free for traction machine.



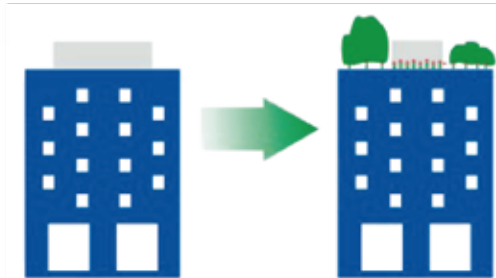
SMALL MACHINE ROOM PASSENGER ELEVATOR

To save the building space expand the building more space utilization so the operation is sensitive and reliable, and the building more elegant and beautiful. FUJI small machine room passenger elevator applies the compact and concentrative permanent synchronous and gearless traction machine and specially-designed control cabinet. There machine room has same area as that of the well.



Space-saving is clear at one glance

A machine room is merely an extension to the hoistway of the elevator. Therefore, the construction of a machine room is easy and inexpensive. The compact permanent magnetic gearless free main unit can reserve larger space for the machine room. During installation, this small main unit requires much lighter hoisting equipment as compared by the one required by the traditional units. It can even be directly hoisted through the hoist-way for installation.

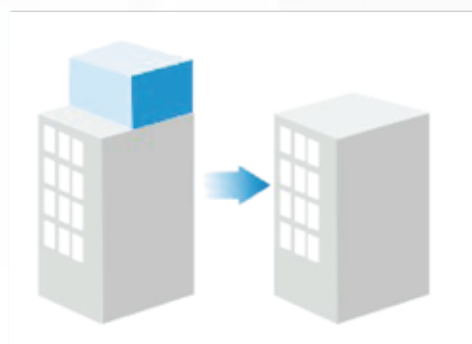


MACHINE ROOMLESS PASSENGER ELEVATOR

FUJI machine roomless elevator incorporates the idea of environmental protection and energy saving, saving, saves building areas and raises design freedom, embodying fully green humanistic ideas. Compared with toothed gear elevators of the same weight, it saves 25% electricity and 10% building area. FUJI Elevator to be equipped with a machine room and provides infinite possibility to create in a limited space in modern buildings.

It effectively utilizes the space

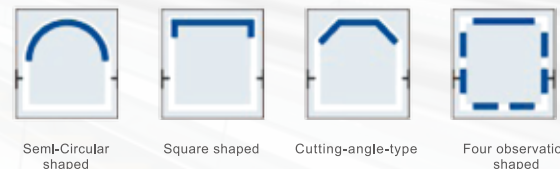
It puts the whole elevator in the well. It removes the restriction of machine room to the building.



We cancel the machine room to freely design the shaft position. We can flexibly and effectively apply the top space which was preset for machine room.

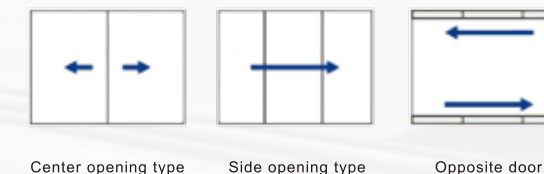
OBSERVATION ELEVATOR

FUJI observation elevator has the features of novel in design, exquisite in appearance, superior quality and being splendidly decorated, showing the outstanding fascination and luxurious style of modern architectures. The energy-saving configuration with variable voltage and variable frequency drive is adopted to reflect the responsibility of the enterprise towards the society. Our profound view towards the urban life is fully revealed by comfortable ride experience, unique fashion look and user-friendly interface settings.



HOSPITAL ELEVATOR

Considering the experience of patients and medical staff, the large handrail, braille buttons are equipped for the convenient access of patients. Various door opening methods are designed to meet different requirements of hospital structures.



FJ-Y01 Standard

Ceiling: Hairline stainless steel Car wall: Hairline stainless steel
Handrail: Stainless steel round rail Floor: PVC

FREIGHT ELEVATOR



FUJI Freight elevator utilizes the advanced microcomputer control technology, through the technical quality of the freight lift and lowers down the trouble occurrence ratio. Because it adopts the AC twospeed electric drive technology, it makes it more simpler for the lift structure and more convenient for the maintenance.



FJ-H01 Standard

Ceiling: Paint steel Car wall/Car door: Paint steel
Illumination: Fluorescent lamp Door opening mode: Side opening
Floor: Checkered plate

CAR ELEVATOR

FUJI Car elevators use the mature car elevation technology. FUJI Car elevators have been developed and produced according to the speciality of the car products. The strong FUJI technical capacity thoroughly solves the lift noise and car shaking out of overload of traction machine system load due to uneven car force. It optimizes the characteristics of these serial products.

FUJI Car elevators have the advantages such as the pleasing outline, concise equipments, simple operation, small covering space, high space utilization etc. FUJI Car elevators are applicable for various occasions. FUJI Car elevators own the large loading capacity and car net size. FUJI Car elevators can transport various models of the cars and small & ordinary minibus.



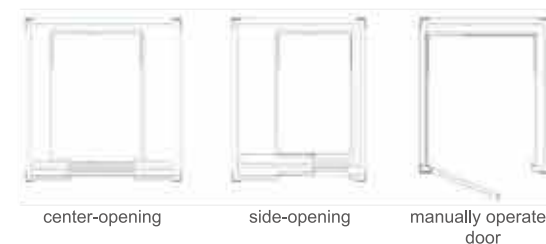
VILLA ELEVATOR



Adhering to the design concept of eco-friendly and energy-saving, adopted latest elevator technology, FUJI villa elevator ensures its reliability and smooth operation. Excellence and charm of FUJI villa elevator is fully highlighted by its elegant car design and exquisite craft.

FUJI villa elevator, a kind of moving scenery, is tailored for matching perfectly with the deluxe and fashionable villa. By taking our home elevator, passengers can enjoy the comfort life.

Alternative door styles, different choice



DUMBWAITER ELEVATOR

FUJI Dumbwaiter elevator saves time and human resource significantly, presenting a beautiful environment by providing a fast, convenient, and economical transportation to the mini-freight elevators in all kinds of constructions

These kinds of elevators are widely used for delivery of foods, dishware, daily necessities, money, documents, medicines, cargoes, books, instruments and letters, etc. in hotels, restaurants, apartments, banks, offices building, hospitals, malls, factories, libraries, labs and post offices and so on.



Rich specifications and models

Load range: 100kg-300kg. Door modes can be divided into windowsill type which is convenient for direct entry/exit of the goods and floor type which is easy for goods cart.



**STANDARD CAR
CONFIGURATION**

Standard car

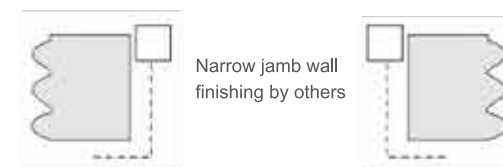


Ceiling: Dusting steel plate, acrylic, LED lighting
 Car wall: Hairline stainless steel
 Front wall: Hairline stainless steel
 Operation panel: Hairline stainless steel
 Car door: Hairline stainless steel
 Floor: PVC
 Skirting: Hairline stainless steel

Standard landing door



FJ-W01
Hairline stainless steel



Standard out call



FJ-W01-01



FJ-W01-02



FJ-W01



FJ-W01S

Standard operation panel



FJ-C01

**PASSENGER ELEVATOR
CAR DECORATION (Optional)**



FJ-K02

Ceiling: Mirror stainless steel framework, acrylic top Plate, intermediate down lamp decoration
Car wall: Stainless steel hairline on both sides, combination of stainless steel hairline and etched mirror at rear wall
Floor: PVC (optional marble)



FJ-K03

Ceiling: Vortical square image main body board and tube lamo combining for soft illumination design
Car wall: Stainless steel hairline on both sides, combination of stainless steel hairline and etched mirror at rear wall
Floor: PVC (optional marble)

**PASSENGER ELEVATOR
CAR DECORATION (Optional)**



FJ-K06

Ceiling: Wide vaulted white transparent light board for soft illumination design
Car wall: Mirror/etching/hairline stainless steel
Handrail: stainless steel single tube
Floor: PVC (optional marble)



FJ-K07

Ceiling: Middle with image roof, side of stainless steel floor with tube lamp for soft illumination design
Car wall: Mirror finish, etching finish, hairline
Handrail: stainless steel single tube
Floor: PVC (optional marble)



FJ-K04

Ceiling: Mirror stainless steel bottom plate acrylic transparent plate, LED lamps.
Car wall: Mirror finish, etching finish, hairline finish
Handrail: Stainless steel pipe
Floor: PVC (optional marble)



FJ-K05

Ceiling: Mirror stainless steel, Acrylic
Car wall: Mirror stainless steel etching, Mirror stainless steel, Hairline stainless steel
Handrail: Hairline stainless steel pipe
Floor: PVC (optional marble)



FJ-K08

Ceiling: Mirror stainless steel framework, acrylic top plate
Car wall: Hairline stainless steel plate and mirror etching stainless steel
Handrail: stainless steel single tube
Floor: PVC (optional marble)



FJ-K09

Ceiling: Stainless steel mirror bottom with rectangular transparent lamppost, The middle part is designed by the soft light of the arched with luminous panel
Car wall: Middle mirror non-embroidered steel etched, both sides textured non-embroidered steel
Floor: PVC (optional marble)

Note: pictures have been drawn by computer. It might be slightly different from actual colors. Please take real product as criterion.

**PASSENGER ELEVATOR
CAR DECORATION (Optional)**



FJ-K10

Integrated Ceiling: Mirror stainless steel base plate with LED lights
Car wall: Mirror etched stainless steel and hairline stainless steel with golden recess
Handrail: Hairline stainless steel
Floor: PVC (optional marble)



FJ-K11

Ceiling: Mirror stainless steel frame, middle image vault
Car wall: Black titanium stainless steel, etching stainless steel
Handrail: Stainless steel flat handrail
Floor: PVC (optional marble)

**PASSENGER ELEVATOR
CAR DECORATION (Optional)**



FJ-K14

Ceiling: Titanium mirror frame, lamppost, translucent panels
Car wall: Titanium stainless steel mirror etching
Floor: PVC (optional marble)



FJ-K15

Ceiling: Titanium stainless steel frame, acrylic roof
Car wall: Titanium, mirror, etching, hairline, and grain
Handrail: Titanium and wood combination
Floor: PVC (optional marble)



FJ-K12

Ceiling: black titanium mirror stainless steel, lighting-passing board with LED downlight
Car wall: black titanium hairline stainless steel, metal mosaic
Handrail: 6*80mm flat handrail
Floor: PVC (optional marble)



FJ-K13

Ceiling: titanium metal mirror stainless steel frame, Ceiling lamp, LED lamp
Car wall: Titanium metal mirror etching
Handrail: Rosewood titanium stainless steel arm
Floor: PVC (optional marble)



FJ-K16

Ceiling: The wooden frame, white acrylic pervious to light
Car wall: Wood veneer, back wall glass in the middle
Floor: PVC (optional marble)



FJ-K17

Ceiling: Wood veneer condole top, hidden lights and LED lights
Car wall: Process, process wood veneer, soft bag leather, art glass
Handrail: Stainless steel handrails process
Floor: PVC (optional marble)

OBSERVATION ELEVATOR CAR DECORATION (Optional)



FJ-G01

Car cover: Steel plate painting
Panorama wall: Circular 6+6 safety glass (3 pieces)
Decoration roof: Steel paint, Acrylic light and the LED lighting
Car wall: Hairline stainless steel
Handrail: Ø25 stainless steel double-barreled
Floor: PVC (marble optional)

FJ-G02

Car cover: Steel plate painting
Panorama wall: Hairline stainless steel, laminated plastic tempered glass
Decoration roof: Dusting steel frame, acrylic, LED light
Car wall: Hairline stainless steel
Handrail: Brushed stainless steel round armrest
Floor: PVC (marble optional)



FJ-G03

Car cover: Hairline stainless steel
Panorama wall: Three glue glass of safety clamp
Decoration roof: White roof lamp with down lamp
Car wall: Stainless steel hairline
Handrail: Stainless steel pipe
Floor: PVC (marble optional)

FJ-G04

Car cover: Steel plate painting
Panorama wall: Hairline stainless steel, laminated glass (6+6)
Decoration roof: Hairline stainless steel, acrylic
Car wall: Hairline stainless steel
Handrail: Mirror stainless steel pipe handrail landing
Floor: PVC (marble optional)



FJ-G05

Car cover: Hairline stainless steel
Car door: Mirror stainless steel frameless glass door
Ceiling: Mirror stainless steel, acrylic lighting
Car wall: Hairline stainless steel
Sightseeing wall: Laminated glass
Handrail: Stainless steel tube
Floor: PVC (marble optional)

FJ-G06

Car cover: Hairline stainless steel
Car door: Mirror stainless steel
Ceiling: Mirror stainless steel, acrylic lighting
Car wall: Hairline stainless steel
Sightseeing wall: 6+6 laminated safety glass (3 pieces)
Handrail: Stainless steel tube
Floor: PVC (marble optional)



FJ-G07

Car cover: Hairline stainless steel
Car door: Rose gold short hairline stainless steel frame glass door
Ceiling: Rose gold short hairline stainless steel frame, acrylic, LED flat lamp
Car wall: Rose gold hairline stainless steel
Sightsee wall: Laminated glass
Handrail: Stainless steel tube
Floor: PVC (marble optional)

VILLA ELEVATOR CAR DECORATION (Optional)



FJ-B01 Standard

Ceiling: Mirror stainless steel plus organic light
Car wall: Mirror, etching, hair pattern
Handrail: Stainless steel single pipe
Floor: PVC



FJ-B02 Optional

Ceiling: Mirror stainless steel frame, LED light
Car wall: Transparent glass
Handrail: Stainless steel single pipe
Floor: PVC (optional marble)



FJ-B03 Optional

Ceiling: Acrylic lighting decoration, stainless steel mirror
Car wall: Stainless steel hairline, stainless steel mirror
Handrail: Stainless steel hairline
Floor: PVC (optional marble)



FJ-B05 Optional

Ceiling: LED integral lamp board
Car wall: Mirror stainless steel, wooden decorative plate, half (full) mirror
Floor: PVC (optional marble)

VILLA ELEVATOR CAR DECORATION (Optional)



FJ-B06 Optional

Ceiling: Painted steel plate (bamboo color), mirror stainless steel plated rose gold, LED lamp, ceiling light
Car wall: Red shadow wood and wood lines, mirror stainless steel plated rose gold, artistic glass
Floor: PVC (optional marble)



FJ-B07 Optional

Ceiling: Titanium mirror stainless steel frame, acrylic transparent plate
Car wall: Red wood lines on both sides, Middle titanium mirror surface in the rear wall
Floor: PVC (optional marble)



FJ-B10 Optional

Ceiling: White wooden border frame, middle round ceiling light
Car wall: Back wall white wood veneer, Plastic mirror, White wood veneer on both sides, Titanium gold border line
Floor: PVC (optional marble)



FJ-B11 Optional

Ceiling: Wood lacquer frame, mirror stainless steel
Car wall: Lacquer wood board, wallpaper decoration
Floor: PVC (optional marble)

HUMAN-MACHINE
INTERFACE



FJ-C02



FJ-W02



FJ-C03



FJ-W03



FJ-C04



FJ-W04

Optional display



6.4\"/>



6.4\"/>

7.0\"/>



10.4\"/>



DECORATION SERIES

Ceiling series



FJ-D02

Acrylic vault,transparent panel,LED lamp



FJ-D03

Stainless steel frame,acrylic lamp,LED lamp



FJ-D04

Stainless steel frame,transparent panel,
LED lamp



FJ-D05

Long hair pattern stainless steel,acrylic



FJ-D06

Powder plate(bead light white),acrylic



FJ-D07

Hairline stainless steel,LED stereo lamp group



FJ-D08

Hairline stainless steel frame with white panel
on the middle



FJ-D09

Mirror stainless steel frame with white lighting and
LED light in the middle

Handrail(Optional)



FJ-FS01



FJ-FS02



FJ-FS03

Floor(Optional)



FJ-DB01



FJ-DB02



FJ-DB03



FJ-DB04



FJ-DB05



FJ-DB06

Color(Optional)



Green

FJ-S01



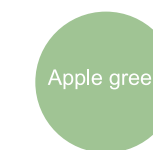
Light gray

FJ-S02



Bone color

FJ-S03



Apple green

FJ-S04



Sea blue

FJ-S05



Silver gray

FJ-S06

DECORATION SERIES



Landing door series



FJ-M02

Mirror,Etching,Hairline

FJ-M03

Mirror,Etching,Hairline



FJ-M04

Titanium,Mirror,Etching

FJ-M05

Mirror,Etching,Rose gold

PASSENGER ELEVATOR PERFECT FUNCTION



Standard Function

Complete set of election function	Direct docking
Idle back to base station function	Self-learning function of shaft
Anti-disturbance function	Lock the ladder function
Overload protection	Car energy saving function
Full load straight	Maintenance operation
Independent operation	Light curtain protection
Open the door in advance function	Terminal floor protection
Close button closes early	Fire forced landing function
Sedan and floor station micro-motion command button	Emergency lighting
Car interior floor the direction of instructions	Five-party call
Lobby floor direction	Alarm
Error instruction delete function	Brake feedback detection function
Driver operation	Speed feedback detection function
Low-speed self-help function	Contactors feedback detection function
Car arrival clock	Start torque automatic compensation



Optional Function

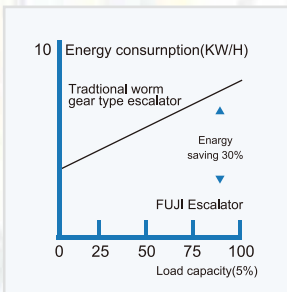
Parallel function	IC card function
Group control function	Emergency power leveling function
Voice reporting station function	Cell monitoring function
Deputy control box function	Open the door to keep the function
Handicapped function	Air conditioning for elevator
Remote monitoring of the internet of things	

ESCALATOR

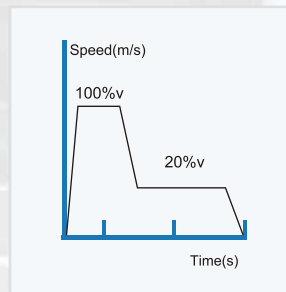
Superior performance, for the smooth line escort

In accordance with the existing international standards and Chinese standards, new materials and advanced technology from domestic and overseas are fully applied to design and manufacture FUJI escalators. The escalator has the features, such as smooth running, low noise, fine durability, easy maintenance etc.

With the compact structure, fine step rail and belt way, beautiful appearance and contemporary design, FUJI escalators are widely used in shopping malls, supermarkets, subways, airports and other high traffic sites, becoming bright flowing scenes of the constructions.

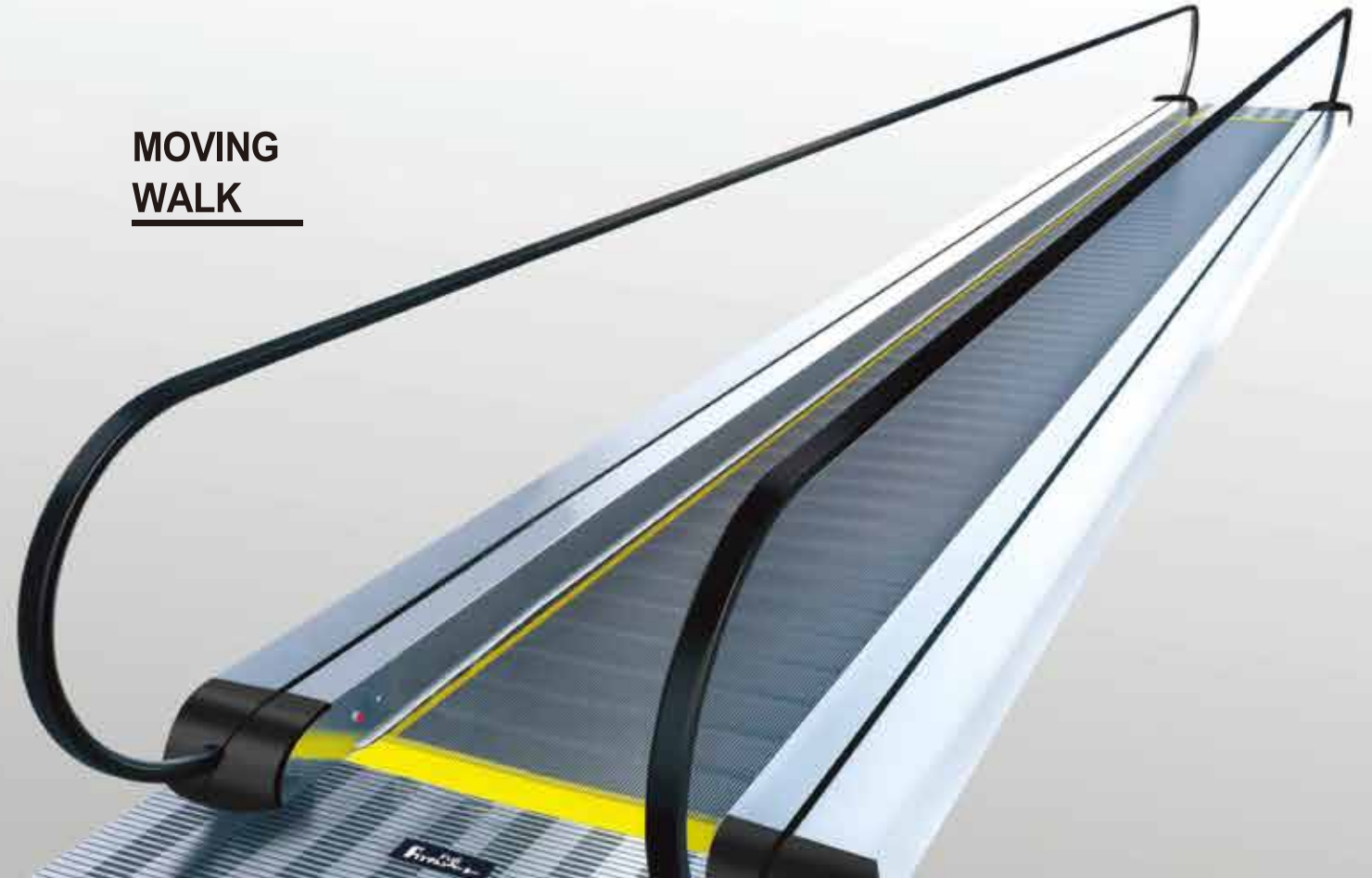


Efficiency comparison conceptual diagram between helical gear speed reducer and worm-gear speed reducer



Variable frequency specification running conceptual diagram

MOVING WALK



The FUJI moving walk brings a new level of simplicity and comfort to shopping. Convenient for people to safety, convenient shopping in the shopping center.

Blending engineering knowhow and style, this reliable and durable solution from FUJI, a globally recognized escalator and moving walk specialist, is an asset to any quality shopping experience.

Small tilt comb

Special motor

Anti-skid slot design



STANDARD FUNCTIONS



Function name	Function descriptor
Function descriptor	Static electricity elimination rung(pedal) generated at runtime
Emergency protection	In need of emergency stop is,press the emergency stop switch to protect
Apron protection	When the utensil sandwiched between the cascade (pedal) Apron protection
Armrest an entrance security protection	When the handrail entry has a foreign body When the protective grip
Drive connection protection	When the drive chain is broken off too long to pratact
Overspeed protection	When the speed is higher than the rated 20% protection
Low speed protection	When the speed is below the rated speed of 80%
Non-operating reversal protection	When the movement direction of the stair and handrail belt and protection when specified in the opposite direction
Lack,wrong an protection	When the electric power supply at the time of its lack of phase or wrong phase protection
Short circuit protection	When the power circuit shot circuit is protecting
Overload protection	When motor continuous overload protection
Cascade(pedal) Subsidence protection	When the cascade (pedal) damage at the time of the sinking of protection
Cascade(pedal) strand breaks an protect the	Protection when cascade (pedal) strand breaks or is too long an protect the
Comb Sexurity protect the	When foreign body clip into the comb teeth protection
Handrail belt speed and fault monitoring	The test strip break handrail belt speed and monitoring
Apron board prewent of device	Cascade skirt on both sides protect brushes
stairstep loss detection	To detect the loss of ladder way of cascade
Brake monitoring switch opens	Monitor whether the brake is open when the escator is running
Piece wheel disc wheel and protective cover open safety switch	When the need to manually turning,open host disc wheel and disc wheel protective cover,safety switch will cut off the circuit,which is safe,prevent to open the elevator
Floor of board monitoring switch	When the pit cover open off safety circuit and stop the escalator safety switch
Monitoring of braking distance	Monitoring of the distance between the escalator and the automatic sidewalk

OPTIONAL FUNCTIONS



Class wainscot color



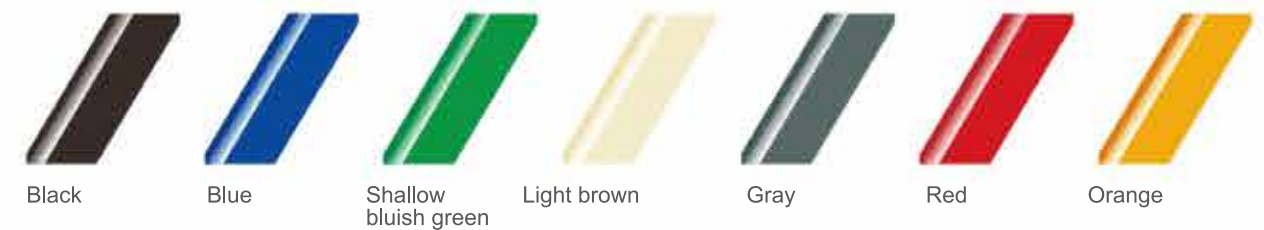
Colorless transparent (Standard)

Yellow

Bronze

Handrail color

different colors of handrails for select



Black

Blue

Shallow bluish green

Light brown

Gray

Red

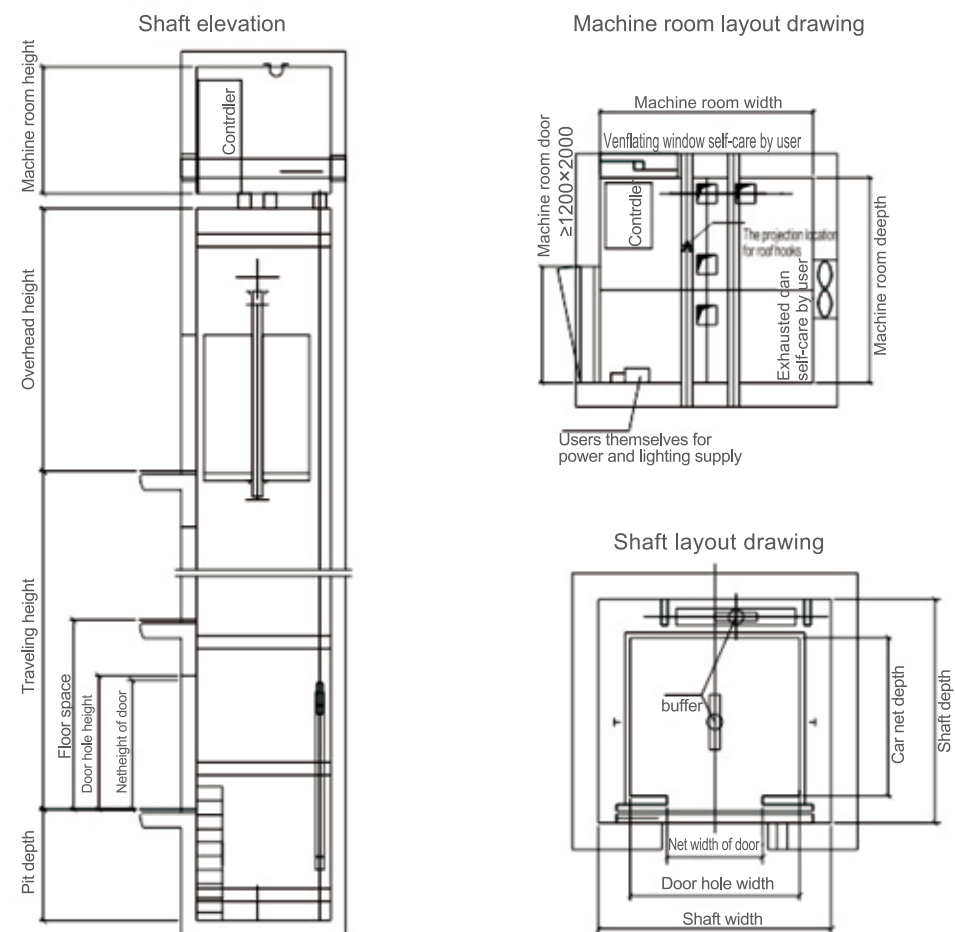
Orange

Skirt panel illumination

Along the cascade running track streamlined skirting lighting light,at run time,not only to maintain the beam and beautiful at the same time stressed that the visibility of the escalators in the entire building and make passengers more comfortable ride and safety.



MACHINE ROOM PASSENGER ELEVATOR CONTRCUTION PARAMETER

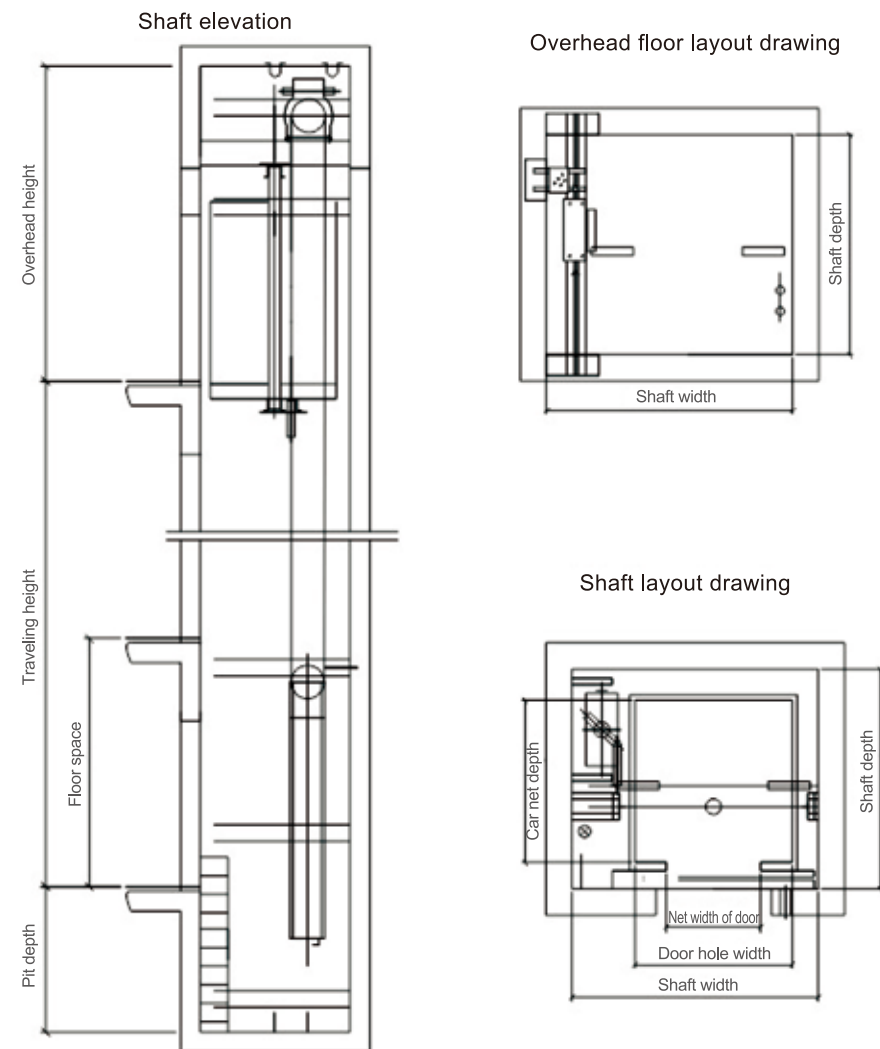


Machine room passenger elevator specifications

Persons	Load/kg	Speed/ms	Net size of car/mm	Net size of door/mm DW×DH	Hoistway size/mm			Machine room size/mm	
			CW×CD×OP	2P Central opening	HW×HD	OH	PD	MW×MD	MH
6	450	1.0	1400×850×2300	800×2100	2000×1500	4200	1500	2000×1500	2500
		1.5/1.75							
8	630	1.0	1400×1100×2300	800×2100	2000×1720	4200	1500	2000×1720	2500
		1.5/1.75							
10	800	1.0	1400×1350×2300	800×2100	2000×1970	4200	1500	2000×1970	2500
		1.5/1.75							
		2.0							
		2.5							
13	1000	1.0	1600×1450×2300 1100×2100×2300 (Residence/stretheher elevator)	900×2100	2200×2120 2100×2500 (Residence/stretheher elevator)	4200	1500	2200×2120 2100×2500 (Residence/stretheher elevator)	2500
		1.5/1.75							
		2.0							
		2.5							
		3.0							
		3.5							
16	1250	1.0	1900×1450×2300	1100×2100	2500×2150	4200	1500	2500×2150	2500
		1.5/1.75							
		2.0							
		2.5							
		3.0							
		3.5							
21	1600	1.0	1900×1800×2300	1100×2100	2500×2500	4200	1500	2500×2150	2500
		1.5/1.75							
		2.0							
		2.5							
		3.0							
		3.5							
21	1600	4.0	1900×1800×2300	1100×2100	2700×2500	6000	3850	2700×2500	2500
		6.0							

Note: Only for reference, final manufacture please follow contract.

MACHINE ROOM PASSENGER ELEVATOR CONTRCUTION PARAMETER



Machine room passenger elevator specifications

Persons	Load/kg	Speed/ms	Net size of car/mm	Net size of door/mm DW×DH	Hoistway size/mm		
			CW×CD×OP	2P Central opening	HW×HD	OH	PD
6	450	1.0	1100×1100×2300	800×2100	2050×1850	4200	1500
8	630	1.0	1400×1100×2300	800×2100	2250×1900	4200	1500
		1.5/1.75				4400	1600
10	800	1.0	1400×1350×2300	800×2100	2250×1950	4200	1500
		1.5/1.75				4400	1600
		2.0				4800	1800
		2.5				4800	2000
13	1000	1.0	1500×1550×2300	900×2100	2350×2150	4200	1500
		1.5/1.75				4400	1600
		2.0				4800	1800
21	1600	1.0	1900×1800×2300	1100×2100	2850×2400	4500	1500
		1.5/1.75				4700	1600
		2.0				4900	1800
21	1600	2.5	1900×1800×2300	1100×2100	2850×2400	5100	2000

Note: Only for reference, final manufacture please follow contract.

Semicircle machine room/Machine roomless elevator specifications

Persons	Load/kg	Speed/ms	Net size of car/mm	Net size of door/mm DW×DH	Hoistway size/mm			Machine room size/mm	
			CW×CD×OP	2P Central opening	HW×HD	OH	PD	MW×MD	MH
8	630	1.0	1100×1600×2000	700×2100	2200×2185	4500	1500	2200×2185	2500
		1.5/1.75				4700	1600		
10	800	1.0	1200×1800×2300	800×2100	2300×2355	4500	1500	2300×2355	2500
		1.5/1.75				4700	1600		
		2.0				4900	1800		
		2.5				5100	2000		
13	1000	1.0	1300×1950×2300	900×2100	2400×2535	4500	1500	2400×2535	2500
		1.5/1.75				4700	1600		
		2.0				4900	1800		
		2.5				5100	2000		
16	1250	1.0	1400×2150×2300	900×2100	2500×2600	4500	1500	2500×2600	2500
		1.5/1.75				4700	1600		
		2.0				4900	1800		
		2.5				5100	2000		
18	1350	1.0	1500×2150×2300	1000×2100	2600×2600	4500	1500	2600×2600	2500
		1.5/1.75				4700	1600		
		2.0				4900	1800		
		2.5				5100	2000		
21	1600	1.0	1500×2450×2300	1000×2100	2600×2900	4500	1500	2600×2900	2500
		1.5/1.75				4700	1600		
		2.0				4900	1800		
		2.5				5100	2000		

Note: Only for reference, final manufacture please follow contract.

Freight elevator specifications

Load/kg	Speed/ms	Net size of car/mm	Net size of door/mm DW×DH	Hoistway size/mm			Machine room size/mm		Door Open type
		CW×CD×OP	2P Central opening	HW×HD	OH	PD	MW×MD	MH	
630	0.5	1200×1500×2200	1100×2100	2100×1860	4200	1500	2500×3000	2200	Four Panel Center Opening
1000	0.5	1500×1800×2200	1200×2100	2250×2160	4200	1500	3000×3000	2200	Four Panel Center Opening
2000	0.5	1570×2900×2200	1500×2100	2700×3260	4200	1500	3500×3000	2500	Four Panel Center Opening
	1.0				4500	1500			
	1.5	2000×2300×2200	2850×2660	4500	1600				
	2.0			4800	1800				
3000	0.25	2070×3050×2200	1800×2100	3300×3410	4500	1500	3800×4200	2500	Four Panel Center Opening
3200	1.0	2070×3100×2200	1800×2100	3300×3460	4500	1500	3800×4200	2500	Four Panel Center Opening
5000	0.25	2800×3400×2500	2000×2200	4200×3800	5000	1600	4200×3800	2800	Four Panel Center Opening
7000	0.5	3000×4200×2500	2600×2400	4500×4600	5000	1600	4500×4600	2800	Four Panel Center Opening
	0.25								
10000	0.25	3070×5760×2500	2600×2500	4900×6200	5000	1600	4900×6200	2800	Four Panel Center Opening

Note: Only for reference, final manufacture please follow contract.

Dumbwaiter elevator specifications

Load/kg	Speed/ms	Net door opening (JJ×HH)mm	Door Open Type	Car Net Size (AA×BB)mm	Shaft Net Size mm		
					AH×BH	PIT	PH
100	0.4	700×1000	Up/down straight opening	700×725	1250×925	1000	2500
200		950×1000	Up/down straight opening	950×975	1500×1175	1000	2500
250		1000×1200	Up/down straight opening	1000×1000	1550×1200	1000	2500
300							

Note: Only for reference, final manufacture please follow contract.

Hospital elevator specifications

Persons	Load/kg	Speed/ms	Net size of car/mm	Net size of door/mm DW×DH	Hoistway size/mm			Machine room size/mm	
			CW×CD×OP	2P Central opening	HW×HD	OH	PD	MW×MD	MH
21	1600	1.0	1400×2400×2300	1100×2100	2550×2900	4500	1500	2550×2900	2500
		1.5/1.75				4700	1600		
		2.0				4900	1800		
		2.5				5100	2000		
24	1800	1.0	1600×2400×2300	1200×2100	2750×2900	4500	1600	2750×2900	2500
		1.5/1.75				4700	1600		
		2.0				4900	1800		
		2.5				5100	2000		
26	2000	1.0	1700×2400×2300	1200×2100	2850×2900	4500	1500	2850×2900	2500
		1.5/1.75				4700	1600		
		2.0				4900	1900		
		2.5				5100	2000		

Note: Only for reference, final manufacture please follow contract.

30° Escalator specifications

Lifting height H(mm)	Speed V(m/s)	Stair width A(mm)	Angle of Inclination (°)	Level stair	Power of driving motor (kw)	Center distance of handrail B(mm)	Width handrail shape C(mm)	Width of pit D(mm)	Transport dimensions	
									h	l
3000≤H≤6000	0.5	600	30	2(3)	5.5/8	838	1200	≥1200	≤2870	≤16860
6000<H≤10000				3	11				Transported by two stages	
3000≤H≤5600	0.5	800	30	2(3)	8	1038	1400	≥1400	≤2870	≤16860
5600<H≤7500				2(3)	11				Transported by two stages	
7500<H≤10000				3	15				Transported by two stages	
3000<H≤4600				2(3)	8				Transported by two stages	
4600≤H≤5600	0.5	1000	30	2(3)	11	1238	1660	≥1660	≤2870	≤16860
5600<H≤7500				3	15				Transported by two stages	
7500<H≤10000				3	2×11				Transported by two stages	
3000<H≤4600				2(3)	8				Transported by two stages	

Note: Only for reference, final manufacture please follow contract.

35° Escalator specifications

Lifting height H(mm)	Speed V (m/s)	Stair width A (mm)	Angle of Inclination (°)	Level stair	Power of driving motor (kw)	Center distance of handrail B(mm)	Width handrail shape C(mm)	Width of pit D(mm)	Transport dimensions	
									h	l
3000≤H≤6000	0.5	600	35	2	8	838	1200	≥1260	≤3000	≤15330
3000≤H≤5200					8				Transported by two stages	
5200≤H≤6000	0.5	800	35	2	11	1038	1400	≥1460	≤3000	≤15330
3000≤H≤5200					8				Transported by two stages	
5200≤H≤6000					11				Transported by two stages	
3000≤H≤5200					8				Transported by two stages	
5200≤H≤6000	0.5	1000	35	2	11	1238	1600	≥1660	≤3000	≤15330
5200≤H≤6000					11				Transported by two stages	

Note: Only for reference, final manufacture please follow contract.

Car elevator specifications

Rated capacity (kg)	Rated speed (m/s)	Net size of car/mm	Net size of door (mm)	Shaft size/mm			Machine room size (mm)	Door open type
		(AA×BB)	(JJ×HH)	(AH×BH)	HR.H	PIT		
3000	0.25/0.5	2700×5800	2400×2200	4100×6160	4800	1600	4100×6160×2500	Four Panel Center Opening
5000	0.25	3500×7200	2600×2200	4750×7560			4750×7560×2500	Four Panel Center Opening
	0.5							

Note: Only for reference, final manufacture please follow contract.